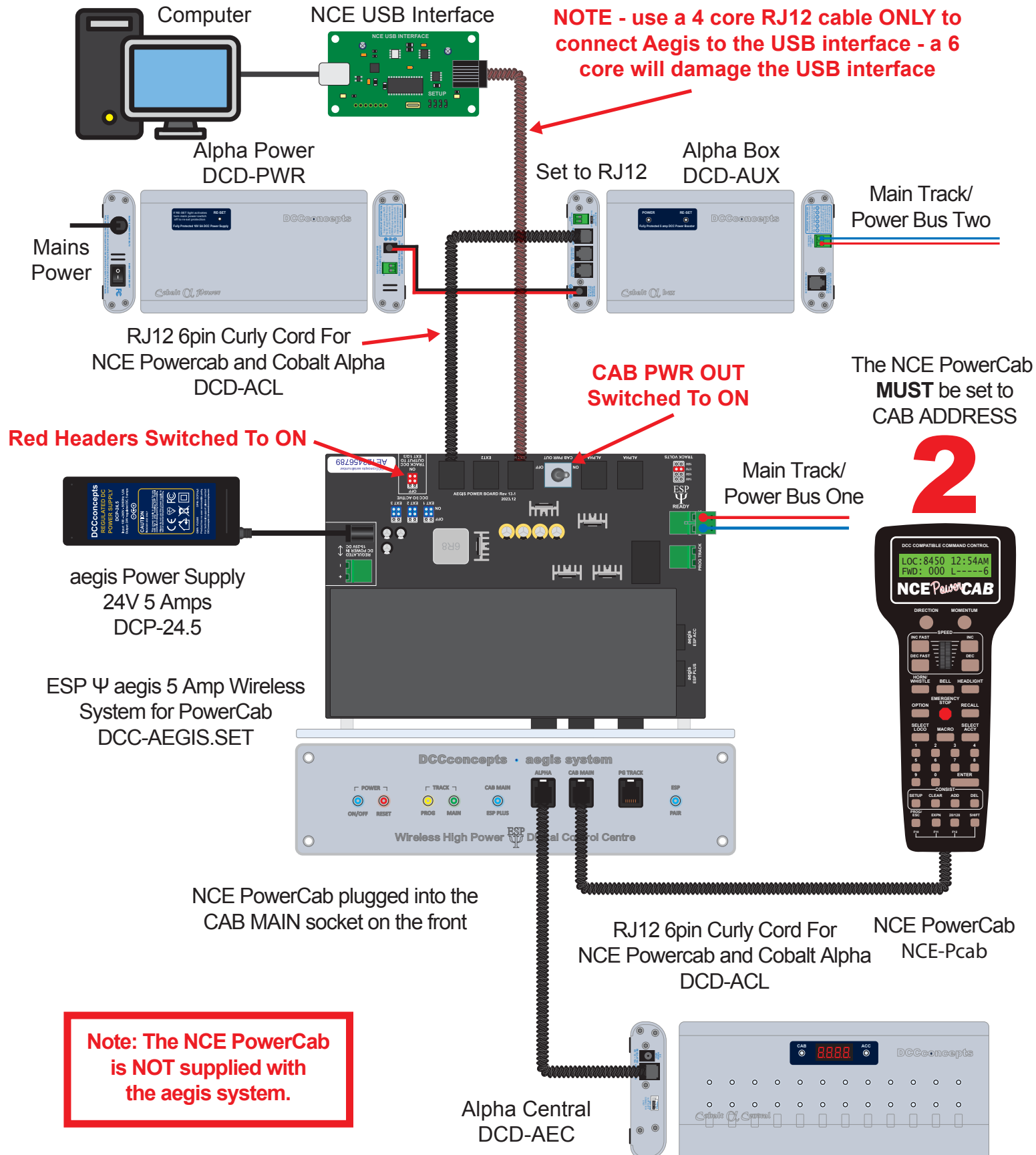




ESP aegis With Alpha Power, Alpha Box And NCE USB Interface



NOTE - use a 4 core RJ12 cable ONLY to connect Aegis to the USB interface - a 6 core will damage the USB interface

CAB PWR OUT Switched To ON

The NCE PowerCab **MUST** be set to CAB ADDRESS

2

Note: The NCE PowerCab is NOT supplied with the aegis system.