



▶ **Locomotives Need Care and Attention...**

Your locomotives need constant care and attention. Whether it is to ensure smooth running and good operation, or to maintain your investment - your fleet needs maintenance.

Servicing, wheel cleaning, lubrication, pick-up alignment...

Your collection needs your constant attention, but great care is always needed - even more so with today's more delicate, highly detailed models.

Nearly every time you perform maintenance, you need to turn the locomotive over, especially when access to the under-body screws is needed.

Picking up your locomotive AND supporting it whilst it is upside down can be precarious - with permanently connected tenders, fine detail and maybe careful weathering which you don't want to disturb. Damage is easily caused when precious models are upside-down on a workbench, held up by a track rubber and a spare bit of wood. We have all been there!



Photo - Steamline Sheffield

▶ **Introducing the DCCconcepts Locomotive Servicing Cradle**



Our servicing cradles are made of super-high grade EVA which is both soft enough to prevent damage to fine detail, but firm enough to allow a locomotive to be picked up from the layout without handing.

Your loco will be held securely in the robust cradle from the moment you collect it from the track and whilst you're performing maintenance.

- *Collect your loco from the layout.*
- *Transfer safely to your workbench.*
- *Perform wheel cleaning, decoder install and maintenance tasks whilst your loco is held safely - with foam end-stops included.*
- *Keep your fleet in tip-top condition and damage-free.*
- *Return your loco to the layout once you're finished.*



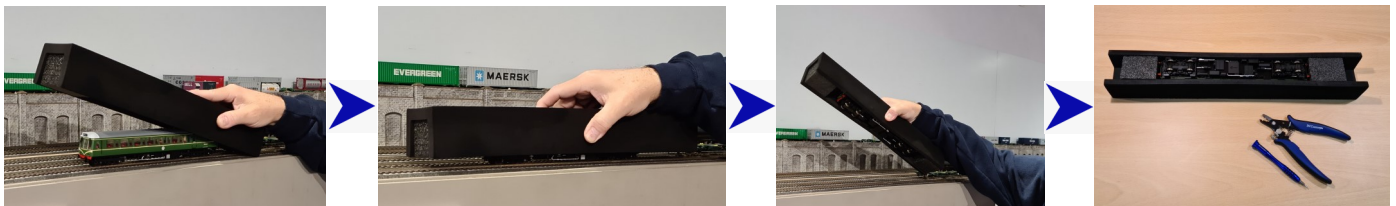


Why the DCCconcepts Servicing Cradle?

Of course - other cradles are available... ..but none are as robust or as versatile as ours.

Cradles made of soft, open-cell foam may damage small details which can be caught in the foam. They can also not be used to pick up the locomotive, or reposition it on your workbench.

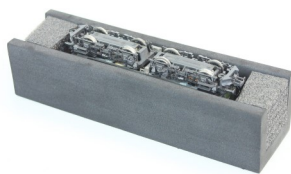
Others are made of quality materials, but are too shallow to be used to collect and transport your locomotives.



Place the cradle over the locomotive, then gently squeeze the sides of the cradle to pick up your loco from the track, before transferring it to your workbench.

Available in 4 sizes to suit every locomotive in your fleet!

The DCCconcepts Loco Servicing Cradle is available in 4 lengths to be the perfect size for any of your fleet of locomotives. Suitable for OO, HO, EM, P4 and S4 scale models and are incredibly good value!



SVC-240 - 240mm Servicing Cradle
UK RRP only £15.95



SVC-340 - 340mm Servicing Cradle
UK RRP only £16.95



SVC-440 - 440mm Servicing Cradle
UK RRP only £17.95



SVC-540 - 540mm Servicing Cradle
UK RRP only £18.95



 **DCCconcepts Dealer Network**

You can buy the Loco Servicing Cradles direct from us on www.dccconcepts.com - or you can order from any of our dealers. Our dealer network is always growing - find out if there is a dealer near you by clicking the globe below!



If you want to know more - just contact us. We are here 6 days a week and will be happy to take your calls any day between 10am and 5pm. You can also find us on Facebook, YouTube and via email to salesuk@dccconcepts.com - so wherever you are, we are only a few moments away!

Best wishes from all of us here at DCCconcepts

Richard Johnson

Did you enjoy the contents—please let us know.

Don't be shy: We invite you to email us and discuss any changes you might like to see and welcome ideas for any "style" changes or additions we could consider to make more interesting reading.

Of course, if you have a specific subject that you would like us to cover, we will listen. Please email us at web@dccconcepts.com and we will see what we can do.

Until then, thank you for sharing your valuable hobby time with us.